



NEW BUTTERFLY iQ+

Ultrasound reinvented again, for you.

Starting at \$2k + membership.



butterflynetwork.com

[butterflynetwork](#)

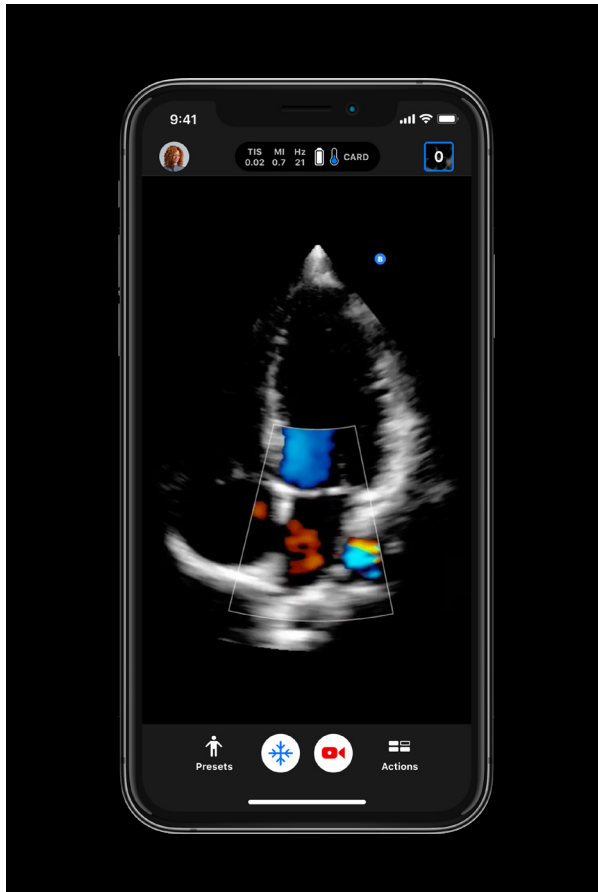
[butterflynetinc](#)

[butterflynetinc](#)

[butterflynetwork](#)

Power meets performance.

- ✓ Innovative low-noise, low power consumption semiconductor process.
- ✓ Optimized electronics with new, power-efficient FPGA.
- ✓ Patented on-chip digital micro-beamforming enabling 15% faster frame rates and 60% faster pulse repetition frequency.
- ✓ 1.75D array beamforming for 85% reduction in elevation beam width.



+ MORE CLARITY

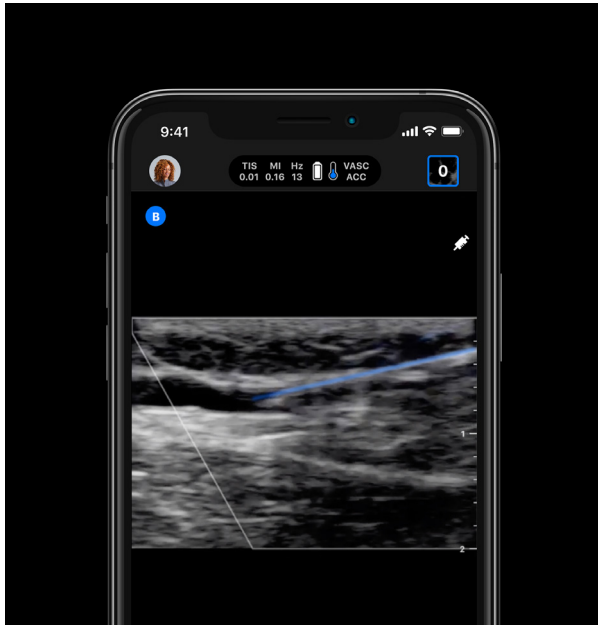
15% faster frame rates.

With faster frame rates, you have the clarity you need to get important insights quickly.

60% faster pulse repetition frequency.

Drawing from the power of the world's only Ultrasound-on-Chip™ technology, the iQ+ delivers sharp, fast imaging that makes a difference to you and your patients.

This all brings you true-to-form color flow, faster cardiac imaging with sharp resolution, crisp and clear lung imaging and ultra-fast bladder volume calculations.



+ MORE CONTROL

3

New Needle Viz™ technology.

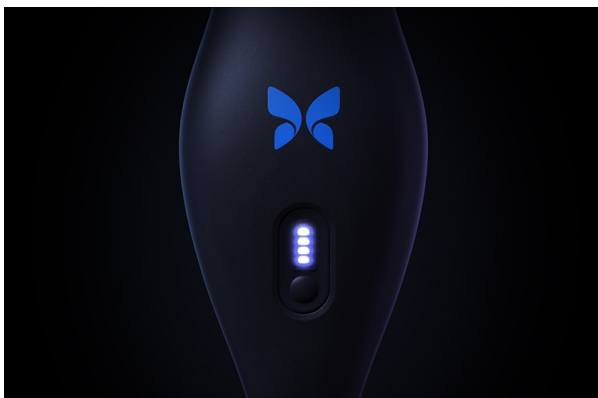
Designed to help detect needles with ease, Needle Viz™ technology helps give you the control you need while performing intricate in-plane guided procedures.

Smaller probe design.

With a 15% smaller probe head design and a 10% shorter probe, we've designed iQ+ to give you even better access through the ribs and around curved surfaces.

+ MORE DURABILITY

With military-grade testing, Butterfly iQ+ can withstand 4-foot drops, a 100G shock pulse, and your toughest shifts. iQ+ has been tested above industry standards and is IP67 compliant to protect against dust and water.* Engineered to tackle your busy shifts and tough environments, the new replaceable, stomp-and-compression-tested cable makes it simpler to use the probe with multiple devices.



+ MORE POWER

Butterfly iQ+ is optimized for more efficient battery usage and better thermal performance, helping you do your best work for longer.

20% Longer battery life.

2x Continuous run time on select presets.

An entire ultrasound system, in your hand.

The beauty is that everything is in one place. Capture images from the app, pull patient information from your worklist and send studies to the secure Butterfly Cloud within seconds. Want to send studies to your PACS? No problem, we do that too.

All your work, any time, anywhere. Butterfly lets you organize, search and access your studies from your mobile or desktop. Easy to share, easy to learn and built securely for collaboration.



Secure and safe. HIPAA compliant, GDPR ready.



Protected at rest.

Your data is AES 256-bit encrypted; in the Butterfly Cloud and on the Butterfly iQ app.

Protected in transit.

Data in transit from the Butterfly iQ app to the Butterfly Cloud is protected by HTTPS, TLS 1.2 encryption.

Monitored and secure.

SOC II certification ensures access to your data is tightly monitored and secured.

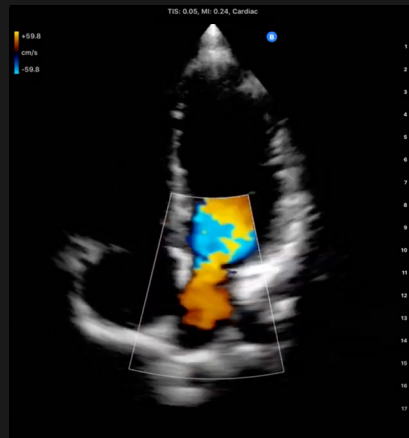
20 presets, 5 modes, 1 probe.

Presets

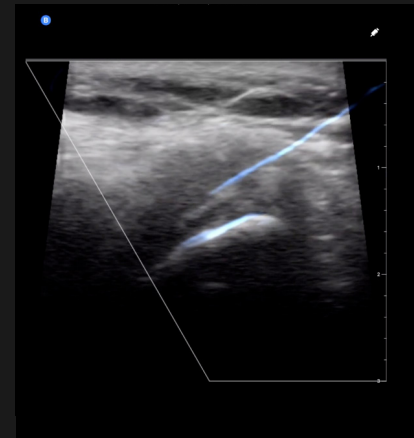
Abdomen
 Abdomen Deep
 Aorta & Gallbladder
 Bladder
 Cardiac
 Cardiac Deep
 FAST
 Lung
 MSK
 MSK Soft Tissue
 Nerve
 OB/GYN
 Ophthalmic
 Pediatric Abdomen
 Pediatric Cardiac
 Pediatric Lung
 Small Organ
 Vascular Access
 Vascular: Carotid
 Vascular: Deep Vein

Modes

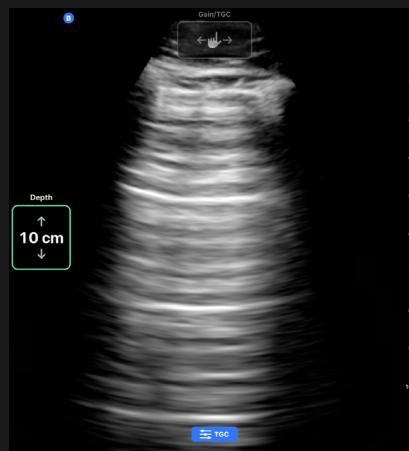
B-Mode
 M-Mode
 Color Doppler
 Power Doppler
 Pulsed Wave Doppler (PWD)



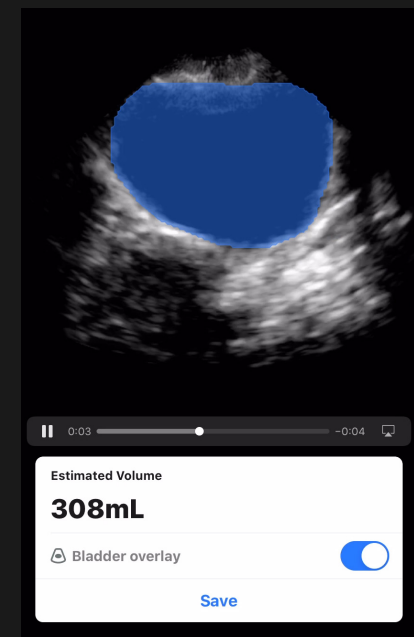
Cardiac Color Doppler shows true-to-form color flow dynamics.



New Needle Viz™ technology helps you locate your needle during in-plane guided procedures.



Sharp lung imaging for demonstration of crisp A lines, B lines and pleural surface irregularities.



Built-in bladder scanner for volume information in seconds.

Hardware

Anodized Aluminum Probe Body, Dust- and Water-Resistant (IP67*)

Dimensions

163 x 56 x 35 mm (6.4 x 2.2 x 1.4 in.)

Weight

309 grams (.68 lbs)

Cable length

Lightning: 1.5 meters (4.92 feet)

USB-C: 1.5 meters (4.92 feet)

Ultrasound-on-Chip™

2D array, 9,000 micro-machined sensors

Battery

2600 mAh Lithium Ion Battery

Life: 144 minutes on average

(≥ 2 continuous hours)

Recharge time: 5 hours (for full recharge)

Wireless charging

Qi-compatible

Imaging

Modes

M-mode, B-mode, Color Doppler, Power Doppler, Pulsed Wave Doppler

Measurements and annotations

Linear measurements (max of 4)

Ellipse measurement (max of 1)

Text labels (create your own or choose from 80+ preset-specific labels)

Min/max scan depth

1cm / 30cm

Tools

Midline marker

Controls

Gain

TGC (near, mid, far)

Depth

Compatibility

Check software and hardware compatibility list at butterflynetwork.com/specs.

Buy now at store.butterflynetwork.com

*IP67 up to the line on the back of the probe.

Contact us at contact@butterflynetwork.com

980-20183-00 Rev B